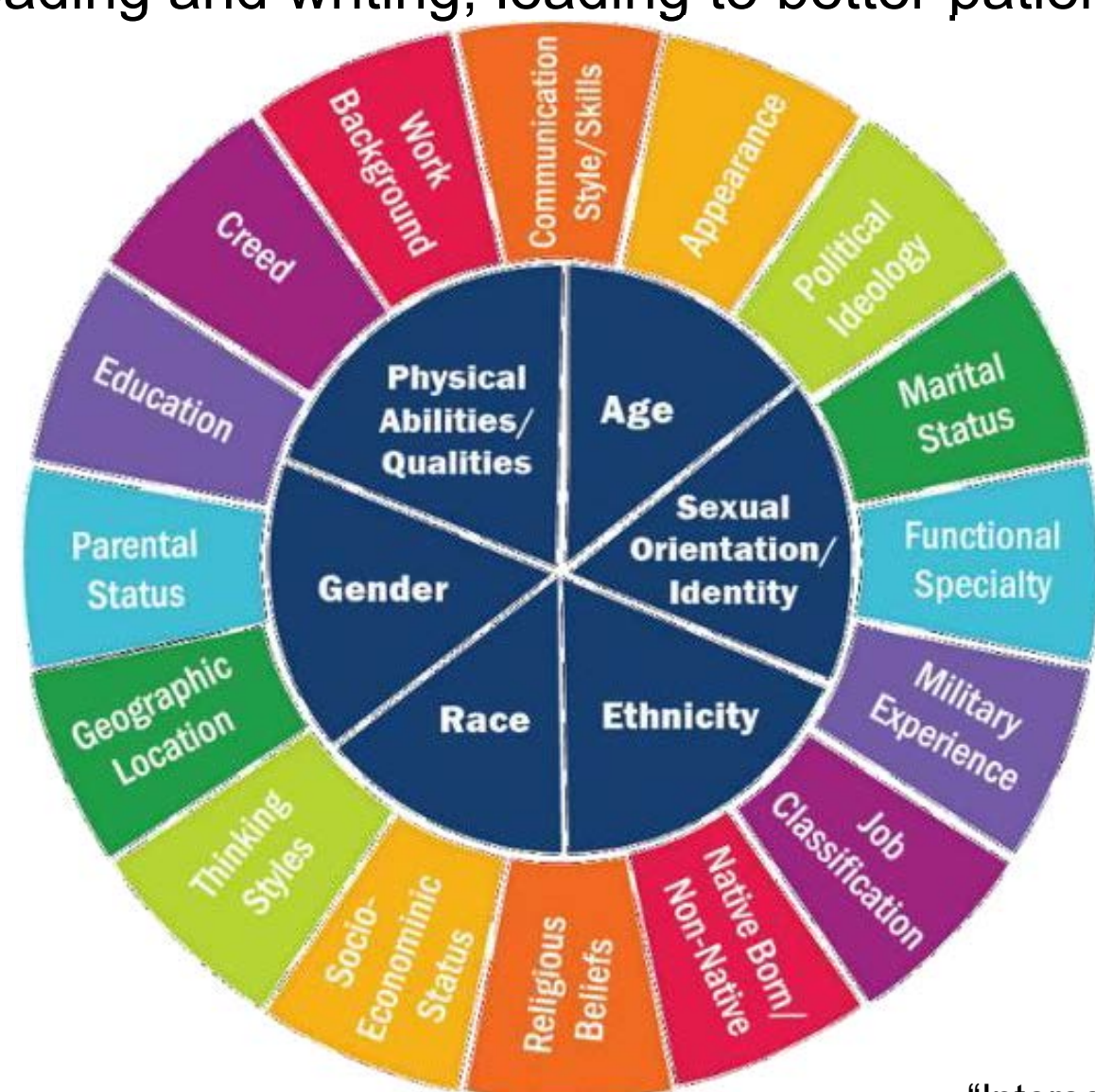


Framework Of Psychiatry Research Interest Momentum Group At Carilion Clinic- VTCSOM

Binx Yezhe Lin MD MSc, Erin McDaid MS, Michael Greenage DO, Anita Kablinger MD
Department of Psychiatry and Behavioral Medicine, VTCSOM-CC; VTCSOM

Introduction

- Psychiatry: constantly evolving and multidisciplinary approach
- Staying up-to-date with the latest research findings is hard!
- There is an increasing need for a research platform to provide opportunities for students to engage in research activities.
- Research interest groups have shown promising impact on individual and departmental academic productivity and might facilitate collaboration and improve patient outcomes. (Puri et al. *Psychosomatics* 2015)
- This study aimed to establish a research interest group in the psychiatry department for trainees and medical students to improve cultural sensitivity of mental health providers using academic reading and writing, leading to better patient care.



"Intersectionality" from Diversity Dimensions Consulting, LLC

Methodology

- Group presentations and discussions
- Feedback and cultural sensitivity surveys to evaluate impact
- Develop and disseminate a research resource packet at enrollment

Format

- Monthly seminar sessions (journal club, case conference, invited lecture, etc.)
- Both in-person and online
- Predetermined topics for each season (3 monthly sessions)
- Registration is required.
- End-of-meeting feedback surveys
- Cultural sensitivity survey after 3 and 6 months

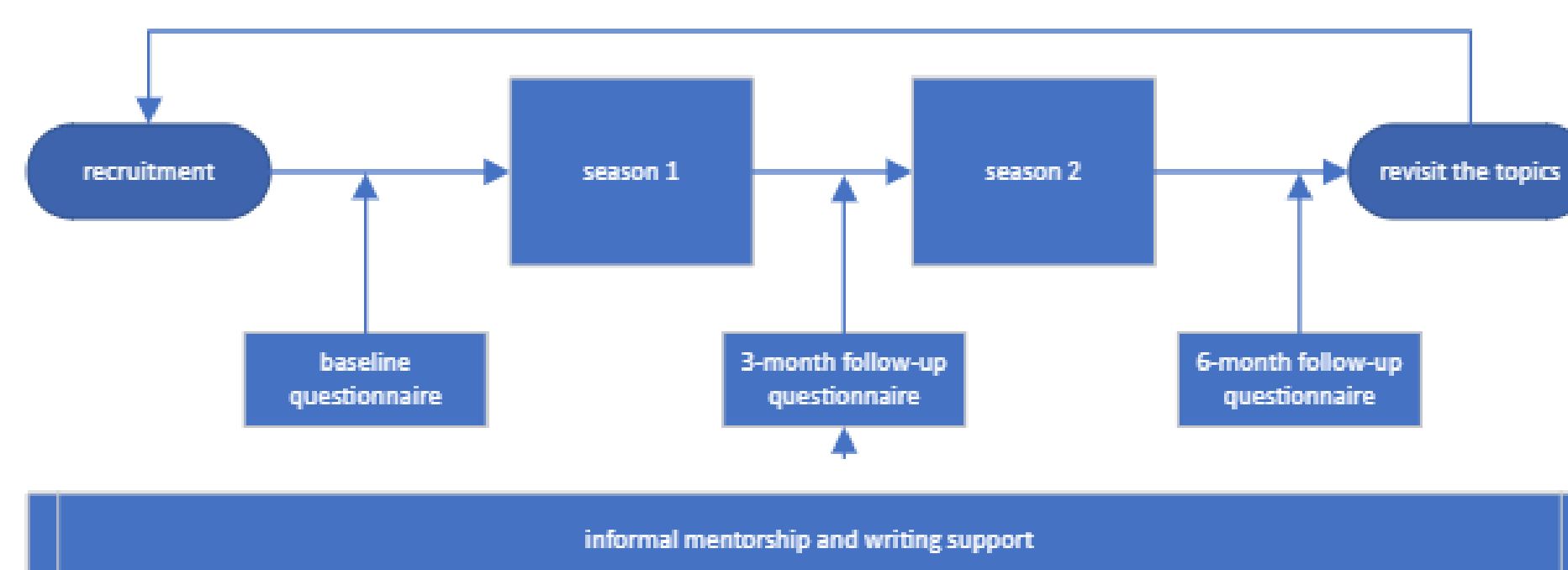
Season topic examples: minority stress, health disparity and equity, social determinants of mental health, etc.



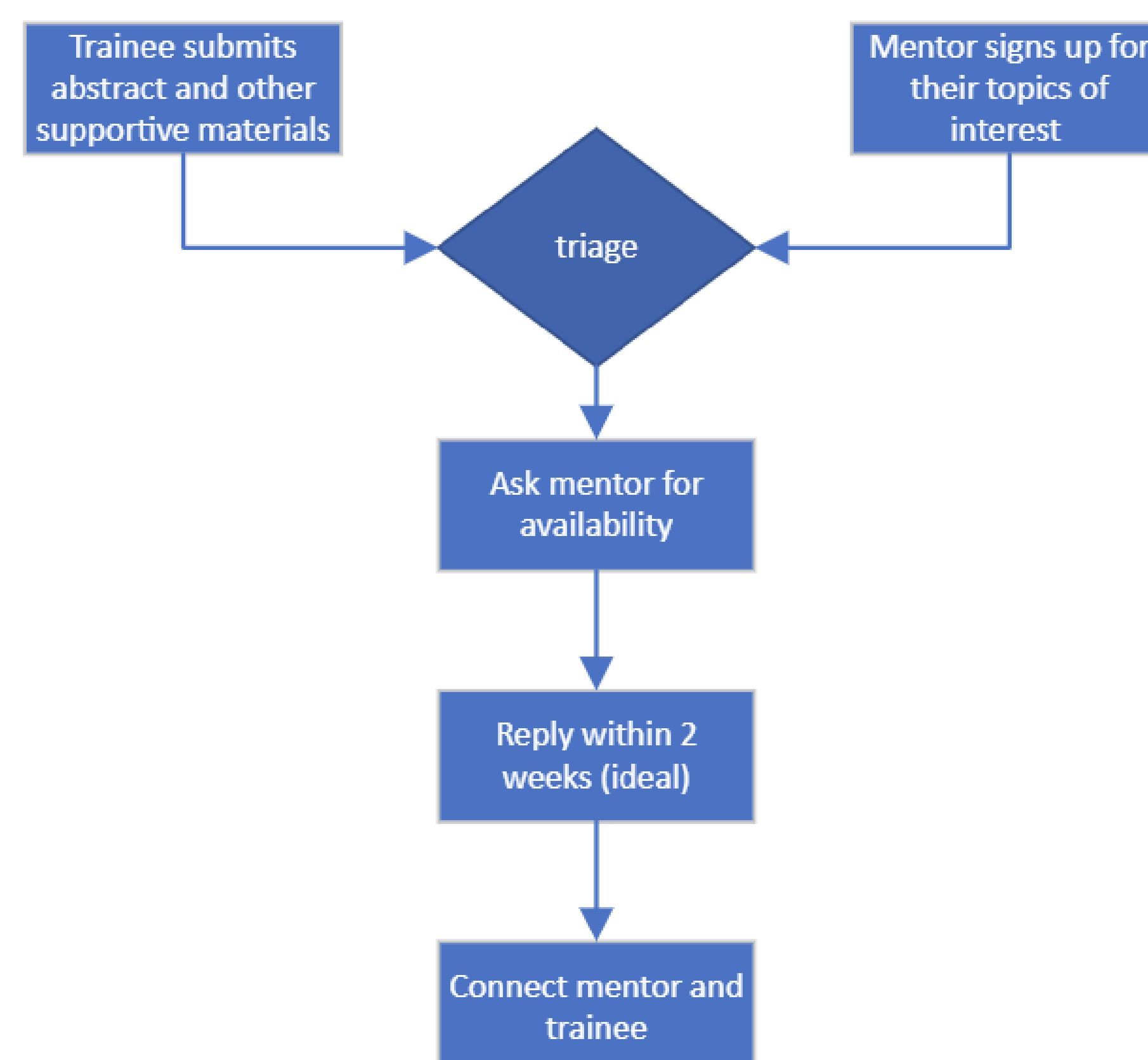
Adapted "Culture Wheel" from BeauteHealth, 2020

Results and procedure

- Psychiatry residents and fellows can enrich their patient understanding through evidence-based psycho-socio-cultural learning. They're encouraged to increase research involvement, foster collaborations, and share findings at conferences or through publications.
- Medical students, upon joining the group, develop/expand research skills, bolster psychiatry comprehension, and foster community service.
- Mentorship by residents and fellows aids in shaping their psychiatric career paths.
- This engagement deepens research commitment, refines creative and presentation proficiencies, and broadens perspectives through conferences.
- Confidence in critical research interpretation and effective communication grows.
- The program also empowers trainees aspiring to research careers or competitive residency programs.



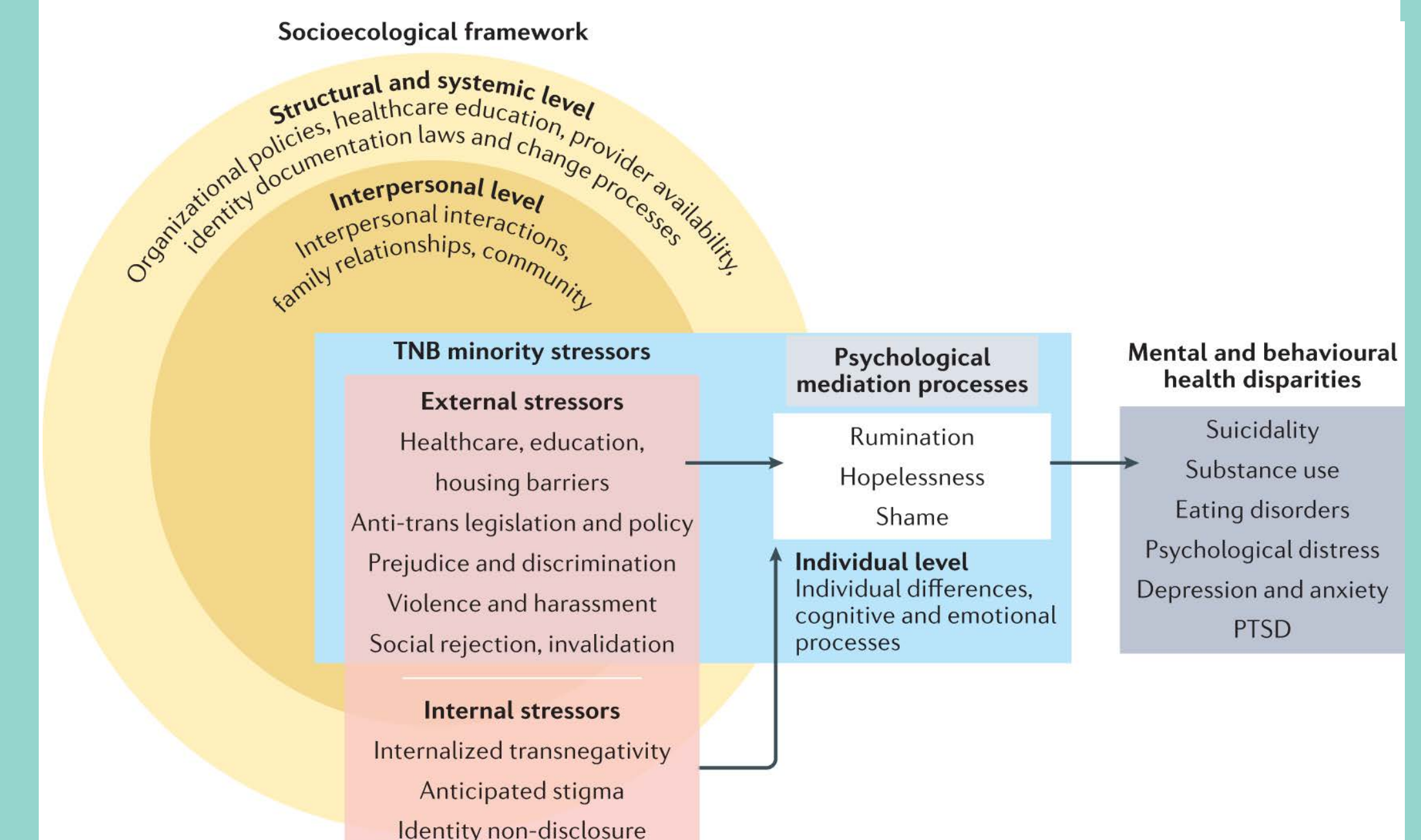
Flowchart 1: Study Procedure



Flowchart 2: Mentorship mechanism in PRIM-G blueprint

Conclusion

- Trainees and students to comprehend the accumulating conceptualizations and advancements in psychiatry from the perspectives of public health, culture, and health disparities.
- To bridge the gap and increase accessibility to research, it is essential to provide trainees and students with opportunities to engage in research activities.
- Scholarly work is also the foundation of clinical work, participating in and reading scholarly work can potentially contribute to better patient care.



An example of discussion framework-minority stress model (Tebbe et al. *Nature review psychology*, 2022)

Acknowledgements

Robert Trestman, Ph.D., M.D.
Ching-Fang Sun, M.D.
Laura Huff, D.O.
Melina Newcomb
Amanda Paxton

No conflict of interests

